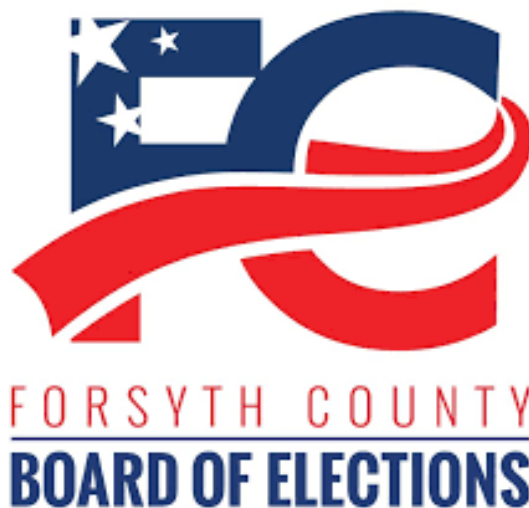


Pocket Guide for Voters

**Forsyth County
Board of Elections
Primary Elections 2020**



www.fcvotes.com • (336)703-2800

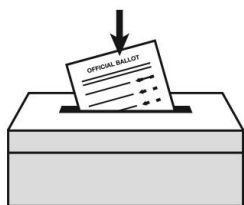
**VOTERS WILL
NOT BE
REQUIRED TO
SHOW VOTER I.D
FOR THE
MARCH 3, 2020
PRIMARY
ELECTION.**

**HOWEVER, SOME FIRST-TIME VOTERS MAY BE ASKED
TO
PRESENT EITHER PHOTO OR NON-PHOTO ID
(ex. Bank statement, utility bill, other government document)**

Ways to vote

At the polls on Primary Election Day

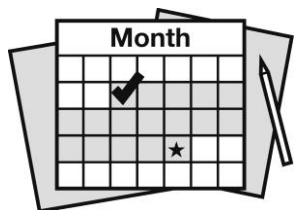
Polls are open on Election Day, **March 3rd, 6:30 a.m. – 7:30 p.m.**



Look up your polling place:

- online at www.fcvotes.com
- or call the Forsyth County Board of Elections at (336)703-2800

One-Stop Early Voting



Vote at any one-stop site in the county during the early voting period: **February 13th – 29th**. You can also register to vote at the same time. **For sites and hours go to www.fcvotes.com.**

Absentee By-Mail



Send in an absentee ballot request **by 5:00 p.m. on February 25th**. Return it by mail, fax, or deliver it to the Board of Elections office. Download the form at www.fcvotes.com.

Deadlines



February 7th by 5:00 p.m.

Last day to register to vote, or update your address, name, or party.

If you move, your polling place may change. Be sure to update your voter registration address every time you move.

February 25th by 5:00 p.m.

Last day to request an absentee ballot by mail.

February 29th by 3:00 p.m.

Last day to vote early in-person. Find an early voting site at www.fcvotes.com.

March 3rd

Election Day – polls are open from 6:30 a.m. to 7:30 p.m.



Find out more at www.fcvotes.com or **(336)703-2800**.

Need help? Get in touch!



Forsyth County Board of Elections

201 N. Chestnut Street
Winston-Salem, NC 27101



Visit our website

www.fcvotes.com



Call us

(336)703-2800



Send us an email

fcvotes@forsyth.cc



Fax us

(336)727-2893

What to expect at the polls

When you arrive, precinct officials will be there to help you.

Check in

State your name and verify your residential address.



Get your ballot



Check your ballot

Does it include all contests for your district?



Go to the voting booth and mark your ballot

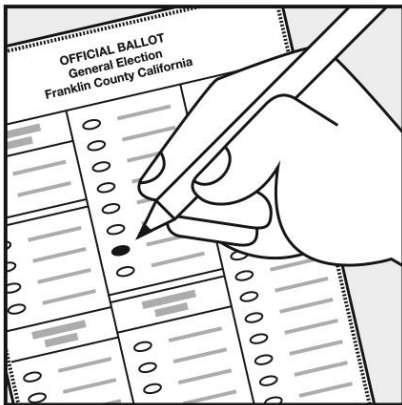


Place ballot in the tabulator

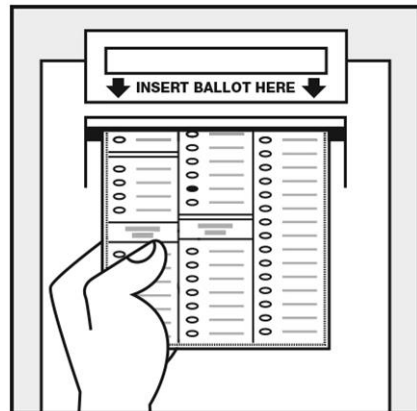
If you are not on the voter list, you may vote a provisional ballot.

How to cast a ballot

To vote on a paper ballot

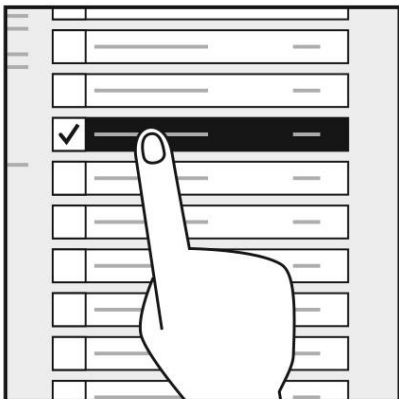


Make your selection by filling in the oval next to your choice(s).

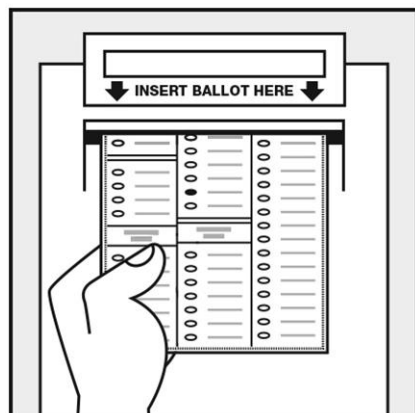


Review and insert your ballot into the tabulator

To vote on a touchscreen



Make your selections on the screen.



Review your selections and insert your ballot into the tabulator.

Accessible voting

All voting sites are handicap accessible

All voters who request assistance are entitled to voter assistance

Who May Assist a Voter?

- Near relatives, including, spouse, parent, child, sibling, grandparent, grandchild, in-law, stepparent, stepchild
- Others, except for those listed below, may assist the voter **ONLY IF** the voter is blind, disabled, or illiterate
- Poll workers may assist any voter

Who May NOT Assist a Voter?

- Voter's employer
- Agent of the voter's employer
- Officer or agent of the voter's union
- Anyone by telephone
- Any elected official or candidate for office unless near relative

Curbside Voting

If you are unable to enter the voting place because of age or physical disability, you may vote from your vehicle. Alert a precinct official of your desire to vote in this manner.